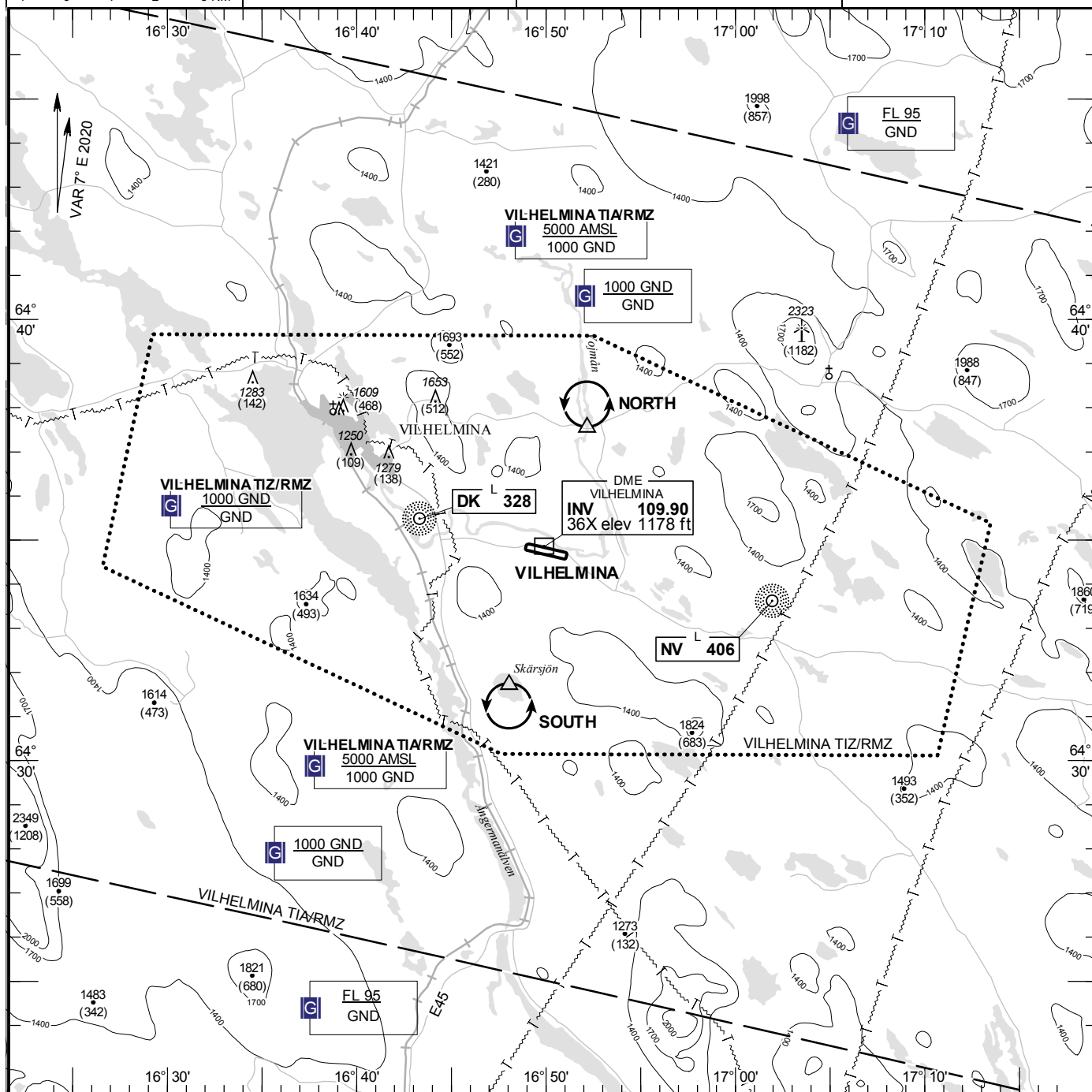


**TA 5000 AMSL**

## 122.555

**VILHELMINA  
SWEDEN**



## NIL

RWY NR	THR ELEV	PAPI (MEHT)
10	1139 ft	Left/3.00° (22 ft)
28	1139.2 ft	Left/3.00° (49 ft)

## NIL

## NII

NORTH:

Hold north of bridge over Vojmån,  
north of point 643732N 0165209E

SOUTH:

Hold at lake Skärsjön, south of point  
643142N 0164802E

See GEN 2.3